

RC Series & 5000 Series Repair Couplings

The Ultimate RC Couplings - Engineered for resistance to heavy earth loads and shear forces, while providing improved pipe alignment.



5000 Series

316 S.S. Nut and Bolt Clamps



Strong Back RC Series

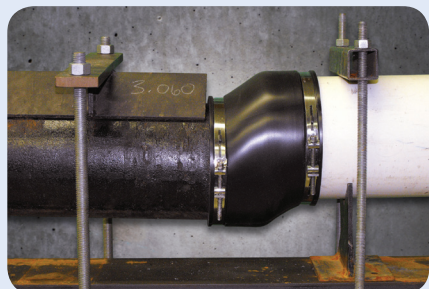
300 S.S. Band Clamps



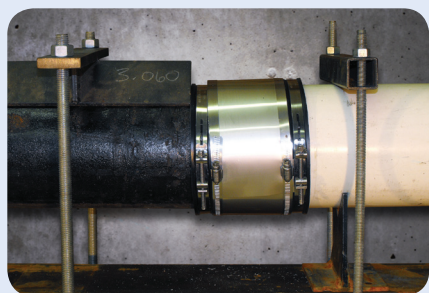
.012" (12mil) Stainless Steel Shield



One Piece Molded-in Bushing Gaskets



Shear Resistance Test using an unshielded sewer coupling per ASTM C 1173 (applied load 50 pounds per nominal inch of pipe diameter)



Shear Resistance Test using a Fernco Repair Coupling per ASTM C 1173 (applied load 50 pounds per nominal inch of pipe diameter)

Ultimate Shear Resistance - .012" (12mil) 300 series stainless steel shear ring is the heaviest the industry offers with excellent resistance to corrosion.

Ultimate Pipe Alignment - Due to the thickness and strength of the Strong Back RC Series shear ring, you are assured consistent pipe alignment against shear forces from soil compaction, shifting and settling, and improper backfill.

Ultimate Sealing Clamps - Fernco's RC Series Couplings come with 301 series stainless steel worm gear clamps. The 5000 Series Couplings come with 316 series stainless steel nut and bolt clamps. Both offer great corrosion resistance.

Ultimate Sealing Gasket - Designed for same pipe size and material connections as well as differing pipe size and pipe material connections. The gasket has a smooth inside surface providing greater sealing performance than ribbed surfaces. The smooth internal wall of the gasket makes contact 360° over its entire length. This equates to a larger sealing surface and a higher coefficient of friction, providing maximum sealing capabilities as well as preventing slippage under the weight of shear forces. The gaskets have excellent resistance to sewer gas, common household chemicals found in the sewer system, as well as dry rot, fungus growth, ozone and UV. When properly installed Strong Back RC series gaskets will provide decades of problem free service.

Ultimate Transition Connections - When making transition connections of differing pipe sizes or materials, the Strong Back RC Series gasket features a one piece molded-in bushing. *Designated part numbers come with an insert bushing.

Ultimate Versatility - Fernco RC Series & 5000 Series couplings offer the ability to connect clay, concrete, asbestos cement fibre, ductile iron, cast iron, steel, plastic and copper.

Meets requirements of:

- **ASTM C 1173** - Standard Specification for Flexible Transition Couplings for Underground Piping Systems
- **ASTM D 5926** - Standard Specification for Poly Vinyl Chloride (PVC) Gaskets for Drain, Waste, and Vent (DWV), Sewer, Sanitary, and Storm Plumbing Systems
- **CSA B602** - mechanical couplings for drain, waste, vent pipe and sewer pipe



United States
PH: 810-653-9626
FX: 810-653-8714

www.fernco.com

Canada
PH: 519-332-6711
FX: 519-332-8610

1001 & 5001 RC Series - Clay to Clay

| RC SERIES | 5000 SERIES | A | | B | | C | |
|---------------|---------------|-------|-----|-------|-----|------|-----|
| 1001-44RC | 5001-44RC | 5.29 | 134 | 5.29 | 134 | 4.10 | 104 |
| 1001-44WCRC | 5001-44WCRC | 5.51 | 140 | 5.51 | 140 | 3.97 | 101 |
| 1001-64RC* | 5001-64RC | 7.50 | 191 | 5.50 | 140 | 6.02 | 153 |
| 1001-66RC | 5001-66RC | 7.50 | 191 | 7.50 | 191 | 6.02 | 153 |
| 1001-66WCRC | 5001-66WCRC | 8.00 | 203 | 8.00 | 203 | 6.00 | 152 |
| 1001-88RC | 5001-88RC | 9.65 | 245 | 9.65 | 245 | 5.99 | 152 |
| 1001-88WCRC | 5001-88WCRC | 10.00 | 254 | 10.00 | 254 | 6.00 | 152 |
| 1001-1010RC | 5001-1010RC | 12.40 | 315 | 12.40 | 315 | 5.90 | 150 |
| 1001-1010WCRC | 5001-1010WCRC | 12.40 | 315 | 12.40 | 315 | 5.90 | 150 |
| 1001-1212RC | 5001-1212RC | 14.51 | 369 | 14.51 | 369 | 6.38 | 162 |
| 1001-1212WCRC | N/A | 15.25 | 387 | 15.25 | 387 | 6.42 | 163 |
| 1001-1515RC | 5001-1515RC | 18.14 | 461 | 18.14 | 461 | 9.89 | 251 |
| 1001-1818RC | 5001-1818RC | 21.90 | 556 | 21.90 | 556 | 9.63 | 245 |
| 1001-2424RC | N/A | 28.97 | 736 | 28.97 | 736 | 9.89 | 251 |

1002 & 5002 RC Series - Clay to Cast Iron or Plastic

| RC SERIES | 5000 SERIES | A | | B | | C | |
|------------------|---------------|-------|-----|-------|-----|------|-----|
| 1002-43RC* | 5002-44RC | 5.29 | 134 | 3.38 | 86 | 4.10 | 104 |
| 1002-44RC | 5002-44WCRC | 5.36 | 136 | 4.51 | 115 | 4.07 | 103 |
| 1002-44WCRC | N/A | 5.44 | 138 | 4.55 | 116 | 3.96 | 101 |
| 1002-46RC* | 5002-46RC | 5.13 | 130 | 6.60 | 168 | 5.74 | 146 |
| 1002-55RC* | 5002-55RC | 6.60 | 168 | 5.50 | 140 | 5.74 | 146 |
| 1002-64RC* | 5002-64RC | 7.50 | 191 | 4.50 | 114 | 6.02 | 153 |
| 1002-64WCRC* | 5002-64WCRC | 8.00 | 203 | 4.50 | 116 | 6.00 | 152 |
| 1002-64WCRC-SDR* | 5002-66RC | 8.00 | 203 | 4.38 | 111 | 6.00 | 152 |
| 1002-66RC | 5002-66WCRC | 7.50 | 191 | 6.56 | 167 | 5.89 | 150 |
| 1002-66WCRC | 5002-86RC | 8.04 | 204 | 6.38 | 162 | 5.91 | 150 |
| 1002-88RC | 5002-88RC | 9.76 | 248 | 8.57 | 218 | 5.96 | 151 |
| 1002-88WCRC | 5002-88WCRC | 10.00 | 254 | 8.66 | 220 | 6.00 | 152 |
| 1002-1010RC* | 5002-1010RC | 12.40 | 315 | 10.75 | 273 | 5.90 | 150 |
| 1002-1010WCRC* | 5002-1010WCRC | 12.40 | 315 | 10.75 | 273 | 5.90 | 150 |
| 1002-1210RC* | N/A | 14.51 | 369 | 10.60 | 269 | 6.00 | 152 |
| 1002-1212RC* | 5002-1212RC | 14.51 | 369 | 12.60 | 320 | 6.38 | 162 |
| 1002-1212WCRC* | N/A | 15.25 | 387 | 12.60 | 320 | 6.42 | 163 |
| 1002-1215RC* | N/A | 14.38 | 365 | 15.25 | 387 | 6.42 | 163 |
| 1002-1515RC* | 5002-1515RC | 18.14 | 461 | 15.40 | 391 | 9.89 | 251 |
| 1002-1818RC* | 5002-1818RC | 21.90 | 556 | 19.00 | 483 | 9.63 | 245 |
| 1002-2121RC* | N/A | 25.46 | 647 | 22.30 | 566 | 9.89 | 251 |
| 1002-2424RC* | N/A | 28.97 | 736 | 25.00 | 635 | 9.89 | 251 |

1003 & 5003 RC Series - Clay to AC or Ductile Iron

| RC SERIES | 5000 SERIES | A | | B | | C | |
|--------------|-------------|-------|-----|-------|-----|------|-----|
| 1003-44RC | 5003-44RC | 5.41 | 137 | 4.94 | 125 | 4.07 | 103 |
| 1003-66RC | 5003-66RC | 7.25 | 184 | 6.84 | 174 | 5.93 | 151 |
| 1003-66WCRC* | N/A | 8.00 | 203 | 6.80 | 173 | 6.00 | 152 |
| 1003-68RC* | N/A | 7.20 | 183 | 9.05 | 230 | 5.98 | 152 |
| 1003-8-10RC* | N/A | 9.65 | 245 | 11.22 | 285 | 5.97 | 152 |
| 1003-88RC | 5003-88RC | 9.75 | 248 | 9.06 | 230 | 5.94 | 151 |
| 1003-1010RC* | N/A | 12.40 | 315 | 11.12 | 282 | 5.90 | 150 |
| 1003-1212RC* | 5003-1212RC | 14.51 | 369 | 13.20 | 335 | 6.38 | 162 |
| N/A | 5003-1516RC | 18.10 | 460 | 18.10 | 460 | 9.89 | 251 |
| 1003-1818RC* | N/A | 21.90 | 556 | 19.50 | 495 | 9.63 | 245 |

1004 & 5004 RC Series - Concrete to Concrete

| RC SERIES | 5000 SERIES | A | | B | | C | |
|-----------|-------------|-------|-----|-------|-----|------|-----|
| 1004-44RC | 5004-44RC | 5.51 | 140 | 5.51 | 140 | 3.97 | 101 |
| 1004-66RC | 5004-66RC | 7.58 | 193 | 7.58 | 193 | 5.94 | 151 |
| 1004-88RC | 5004-88RC | 10.38 | 264 | 10.38 | 264 | 5.90 | 150 |

| | | | | | | | |
|-------------|---------------|-------|-----|-------|-----|------|-----|
| 1004-1010RC | 5004-1010RC | 12.40 | 315 | 12.40 | 315 | 5.90 | 150 |
| 1004-1212RC | 5004-1212RC | 15.25 | 387 | 15.25 | 387 | 6.42 | 163 |
| N/A | 5004-1212LCRC | 15.25 | 387 | 15.25 | 387 | 6.42 | 163 |
| 1004-1515RC | N/A | 19.74 | 501 | 19.74 | 501 | 9.89 | 251 |

1006 & 5006 RC Series - Concrete to Cast Iron or Plastic

| RC SERIES | 5000 SERIES | A | | B | | C | |
|--------------|-------------|-------|-----|-------|-----|------|-----|
| 1006-44RC* | 5006-44RC | 5.64 | 143 | 4.51 | 115 | 3.97 | 101 |
| 1006-64RC* | N/A | 7.58 | 193 | 4.38 | 111 | 5.94 | 151 |
| 1006-66RC* | 5006-66RC | 7.63 | 194 | 6.63 | 168 | 5.94 | 151 |
| 1006-86RC* | N/A | 10.38 | 264 | 6.38 | 162 | 5.90 | 150 |
| 1006-88RC* | 5006-88RC | 10.49 | 266 | 8.63 | 219 | 5.90 | 150 |
| 1006-1010RC* | 5006-1010RC | 12.40 | 315 | 10.75 | 273 | 5.90 | 150 |
| 1006-1212RC* | 5006-1212RC | 15.25 | 387 | 12.60 | 320 | 6.42 | 163 |
| 1006-1515RC* | N/A | 19.74 | 501 | 15.40 | 391 | 9.89 | 251 |

1051 & 5051 RC Series - AC or Ductile Iron to Cast Iron or Plastic

| RC SERIES | 5000 SERIES | A | | B | | C | |
|--------------|-------------|-------|-----|-------|-----|------|-----|
| 1051-44RC | 5051-44RC | 4.80 | 122 | 4.39 | 112 | 3.94 | 100 |
| 1051-45RC* | N/A | 5.00 | 127 | 5.52 | 140 | 3.97 | 101 |
| 1051-46RC* | 5051-46RC | 4.75 | 121 | 6.60 | 168 | 5.74 | 146 |
| 1051-55RC* | N/A | 5.90 | 150 | 5.50 | 140 | 5.92 | 150 |
| 1051-64RC* | 5051-64RC | 6.95 | 177 | 4.38 | 111 | 5.92 | 150 |
| 1051-65RC* | N/A | 6.95 | 177 | 5.50 | 140 | 5.92 | 150 |
| 1051-66RC | 5051-66RC | 6.69 | 177 | 6.69 | 170 | 5.91 | 150 |
| 1051-8-10RC* | N/A | 9.05 | 230 | 10.63 | 270 | 5.89 | 150 |
| 1051-88RC | 5051-88RC | 9.25 | 235 | 8.51 | 216 | 5.97 | 152 |
| 1051-10-8RC* | N/A | 11.02 | 280 | 8.38 | 213 | 5.97 | 152 |
| N/A | 5051-1010RC | 11.02 | 280 | 10.52 | 267 | 5.85 | 148 |
| 1051-1212RC* | 5051-1212RC | 13.37 | 340 | 12.60 | 320 | 5.97 | 152 |
| N/A | 5051-1615RC | 18.14 | 461 | 15.40 | 391 | 9.89 | 251 |
| 1051-1818RC | N/A | 19.74 | 501 | 19.74 | 501 | 9.89 | 251 |

1055 & 5055 RC Series - AC or Ductile Iron to AC or Ductile Iron

| RC SERIES | 5000 SERIES | A | | B | | C | |
|-------------|-------------|-------|-----|-------|-----|------|-----|
| 1055-44RC | 5055-44RC | 4.75 | 121 | 4.75 | 121 | 3.96 | 101 |
| 1055-66RC | 5055-66RC | 6.65 | 169 | 6.65 | 169 | 5.92 | 150 |
| 1055-88RC | 5055-88RC | 9.05 | 230 | 9.05 | 230 | 5.98 | 152 |
| 1055-1212RC | 5055-1212RC | 13.37 | 340 | 13.37 | 340 | 5.97 | 152 |

1056 RC Series - Cast Iron, Plastic, Copper, Steel or Lead

| RC SERIES | 5000 SERIES | A | | B | | C | |
|-------------|-------------|-------|-----|-------|-----|------|-----|
| 1056-150RC | N/A | 1.94 | 49 | 1.94 | 49 | 3.43 | 87 |
| 1056-22RC | N/A | 2.41 | 61 | 2.41 | 61 | 3.45 | 88 |
| 1056-32RC* | N/A | 3.52 | 89 | 2.38 | 60 | 3.96 | 101 |
| 1056-33RC | N/A | 3.46 | 88 | 3.46 | 88 | 3.98 | 101 |
| 1056-43RC* | 5056-43RC | 4.58 | 116 | 3.38 | 86 | 4.02 | 102 |
| 1056-44RC | 5056-44RC | 4.58 | 116 | 4.58 | 116 | 4.02 | 102 |
| 1056-54RC* | 5056-54RC | 5.52 | 140 | 4.38 | 111 | 3.97 | 101 |
| 1056-55RC | 5056-55RC | 5.52 | 140 | 5.52 | 140 | 3.97 | 101 |
| 1056-64RC* | 5056-64RC | 6.60 | 168 | 4.50 | 114 | 5.74 | 146 |
| 1056-65RC* | N/A | 6.60 | 168 | 5.62 | 143 | 5.74 | 146 |
| 1056-66RC | 5056-66RC | 6.60 | 168 | 6.60 | 168 | 5.74 | 146 |
| 1056-86RC* | N/A | 8.64 | 219 | 6.63 | 162 | 6.04 | 153 |
| 1056-88RC | 5056-88RC | 8.64 | 219 | 8.64 | 219 | 6.04 | 153 |
| 1056-1010RC | 5056-1010RC | 10.63 | 270 | 10.63 | 270 | 5.89 | 150 |
| 1056-1212RC | 5056-1212RC | 12.52 | 318 | 12.52 | 318 | 6.32 | 161 |
| 1056-1515RC | 5056-1515RC | 15.92 | 404 | 15.92 | 404 | 9.89 | 251 |
| 1056-1818RC | 5056-1818RC | 19.10 | 485 | 19.10 | 485 | 9.89 | 251 |
| N/A | 5056-2424RC | 25.10 | 638 | 25.10 | 638 | 9.89 | 251 |