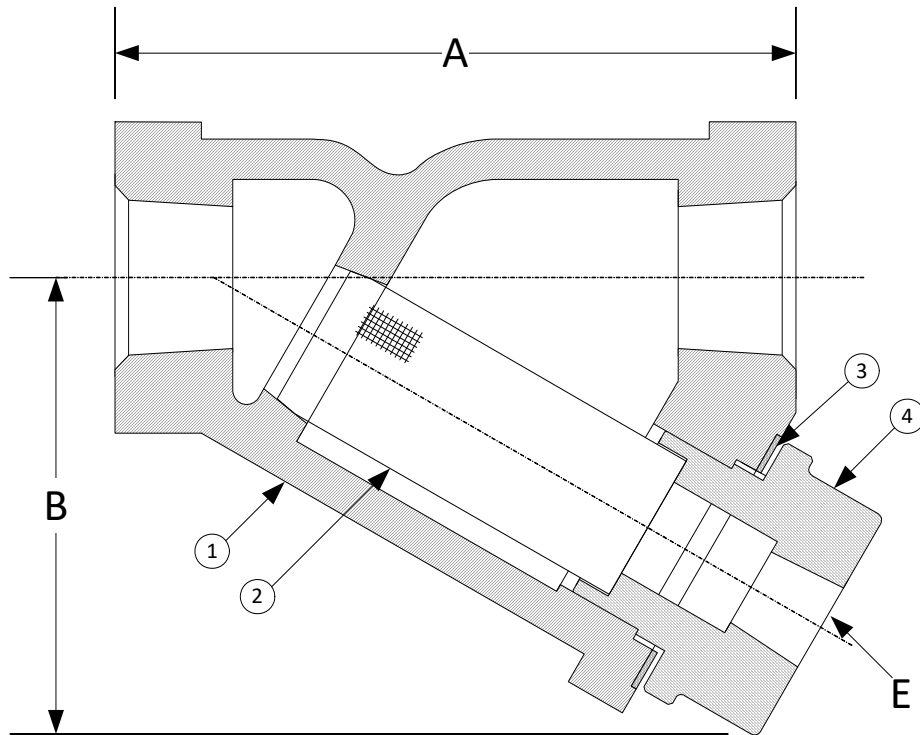


DRAWING NO.
AL 112700



BODY PRESSURE & TEMPERATURE RATINGS – NON SHOCK		
NOM. RATING	MEDIA	1/4" to 3"
250# (THREADED)	STEAM	250 PSI @ 406°F
	W.O.G.	400 PSI @ 150°F

PARTS LIST		
ITEM	DESCRIPTION	MATERIAL
1	BODY	CAST IRON (ASTM A 126, CLASS B)
2	SCREEN	STAINLESS STEEL (304)
3	GASKET	GRAPHITE
4	BUSHING	CAST IRON (ASTM A 126, CLASS B)

Optional: Blow-off Plug, Malleable Iron

Product Number†	SIZE	DIMENSIONS (in)			WEIGHT (lbs)
		A	B	E	
1/43THY-CIM20M34-FT	1/4	3-3/16	2-1/16	1/4	2
3/83THY-CIM20M34-FT	3/8	3-3/16	2-1/16	1/4	2
1/23THY-CIM20M34-FT	1/2	3-3/16	2-1/16	1/4	2
3/43THY-CIM20M34-FT	3/4	3-3/4	2-7/16	3/8	3
13THY-CIM20M34-FT	1	4	2-5/8	3/8	3
11/43THY-CIM20M34-FT	1-1/4	5	3-3/8	3/4	5
11/23THY-CIM20M34-FT	1-1/2	5-3/4	3-7/8	3/4	7
23THY-CIM20M34-FT	2	7	4-3/4	1	13
21/23THY-CI062P34-FT	2-1/2	9-1/4	5-7/8	1-1/2	26
33THY-CI062P34-FT	3	10	6	1-1/2	30

†See "Style B7 Product Number Configuration" for additional options.

Face to face values tolerance in compliance with ASME B16.4.

STANDARD SCREENS SUPPLIED

SIZE	SCREEN PERFORATION			
	FOR LIQUID	OPEN AREA	FOR STEAM	OPEN AREA
in	in		in	
1/4 to 2	20 MESH STAINLESS STEEL			49%
2-1/2 to 3	1/16	30%	3/64"	33%

Standard screens supplied are for **liquid service**, unless otherwise specified.
Options: Other meshes, perforations, and screen materials are available.

KECKLEY

3400 CLEVELAND SKOKIE ILLINOIS

DRAWING NO.
AL 112700

DIMENSIONAL ASSEMBLY

PART NO.

1/4" to 3" 250# Threaded Style B7

SCALE: NTS

DATE: 09/21/2020

MAT'L: Cast Iron

REQ. ---

DR. BY DSF